

# Chacewater School – LEAP into Learning

Term: Spring 1<sup>st</sup> Half term

Class: Mighty Oaks Y6

Theme: Would you like to live in the Desert?

On this page you will find an outline of our learning this half term in Year 6.

## Mathematics:

### Ratio and proportion



- solve problems involving the relative sizes of 2 quantities where missing values can be found by using integer multiplication and division facts
- solve problems involving the calculation of percentages [for example, of measures and such as 15% of 360] and the use of percentages for comparison
- solve problems involving similar shapes where the scale factor is known or can be found
- solve problems involving unequal sharing and grouping using knowledge of fractions and multiples

### Algebra



- use simple formulae
- generate and describe linear number sequences
- express missing number problems algebraically
- find pairs of numbers that satisfy an equation with 2 unknowns
- enumerate possibilities of combinations of 2 variables

### Measurement



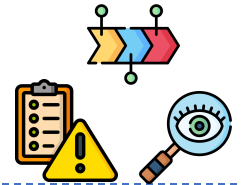
- Convert and calculate with metric measurements
- Convert between miles and kilometres
- Convert and calculate imperial units of measure

**History:** We will learn about and understand how Charles Darwin's expedition to the Galapagos Islands fits into the Victorian period and the impact that his theories had during this time.

Who was Charles Darwin and what did he do? In which era was he alive?

Why was his theory significant?

How did people in Victorian Britain react to it?



### Geography:

We will be learning about the Galapagos Islands and comparing it with other places in the world, identifying key similarities and differences. In addition we will recap and learn about: biomes, climate zones, longitude, latitude and hemispheres.

What are the main differences between the Northern and Southern Hemisphere?

What is a climate zone?

What is a biome?

How is climate and vegetation connected within a biome?

Where and what are the Galapagos like? What was the journey of HMS Beagle?

How does the Galapagos Islands compare with a region in the UK (Isles of Scilly)?

In what ways are some biomes vulnerable and how can they be protected?



### Art:

Painting - Brave Colour

- To be able to explore the work of Terry Frost
- To collect colour to create a colour moodboard - linking to emotion
- To be able to create a colour pallet using tones and tints - influenced by the work of Terry Frost
- To explore how Terry Frost's artwork uses line and shape
- To be able to show line, shape and tones in a painting in the style of Terry Frost



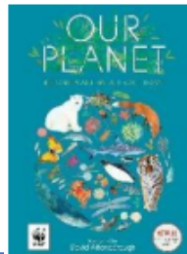
## **English**

1. <https://www.literacyshed.com/the-music-video-shed.html>

In English, we will be exploring a Literacy Shed video called 'Titanium'. Using this as our hook, we will be writing a range of excerpts, including a setting description, to be able to build a short story in the form of a 1st person narrative.



2. Our Planet - to write an information text about a global biome or local habitat using at least two distinct levels of formality.



## **Computing: Variables in Games**

Our unit explores the concept of variables in programming through games in Scratch. We will be developing our understanding of variables in a new programming language, learning where variables can be used and how they can be set and changed through the running of a program. We will apply our knowledge of variables and design to improve our game in Scratch.

## **Religious Education: Creation and science: conflicting or complementary?**

This unit will enable us to explore the Creation story and discuss why might some people say creation and science are in conflict, whilst others say they are complementary?

## **RHSE: Caring and Responsibilities**

We will be learning about how responsibility changes as we get older and explore how we can take more responsibility for self-care. We will be learning about managing money and who cares for us as we grow older, including at secondary school.

# Chacewater School – LEAP into Learning

## HOME LEARNING

Term: 1<sup>st</sup> Spring term

Class: Mighty Oaks Y6

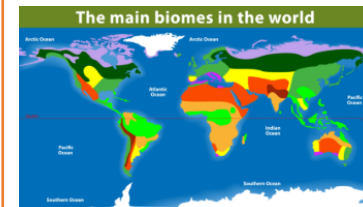
Theme: Would you like to live in the desert?

Alongside regular reading, spelling and maths home learning choose at least one of the following to complete over this half term. You might even be inspired and choose more than one! Please email any work to: [mightyoaks@chacewaterschool.co.uk](mailto:mightyoaks@chacewaterschool.co.uk)

**Watch educational videos,** such as those available on [BBC Teach](#) or YouTube, to learn about biome characteristics and animal adaptations

**Biome Bunting** Create a string of flags (bunting) where each flag represents a different biome and includes facts and illustrations.

**Interactive Map Analysis** Label a world map with the locations of different biomes.



**Illustrate a Biome** Draw and colour a detailed picture of a biome, including native plants and animals, maybe adding a fact border.

### WILD CARD

Choose anything you would like linked to our topic



**Can you create your own biome?** You can create this practically using art materials or even with your toys such as lego or duplo!



**Find out as much as you can about the different biomes found in the world.**

Can you compile your research into a presentation?

**Biome Comic Strip** Create a short story about an animal's day in its biome, highlighting its adaptations and challenges

**Threats & Solutions:** Investigate a threat (like deforestation) to a biome and suggest ways humans can help