

# Chacewater School – LEAP Into Learning - Spring 1 – Mighty Oaks

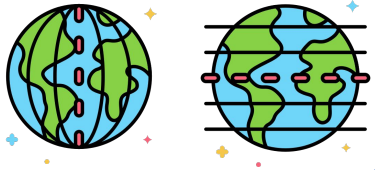
## Geography – Would you like to live in the desert?



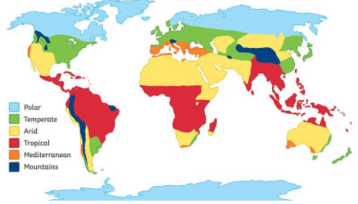
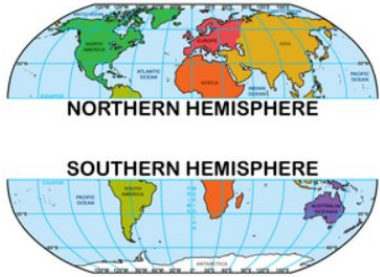
What I might already know: Northern and Southern Hemisphere, The Equator

Climate Zone: a part of the world where places have a similar climate (i.e. arid, Mediterranean, temperate, tropical, polar)

What we will be learning:



Revisit: northern, southern hemisphere and Lines of latitude and longitude/ climate zone



A **biome** is a large area on the Earth's surface that is defined by the types of animals and plants living there. There are five major types of biomes: **aquatic**, **grassland**, **forest**, **desert**, and **tundra**.



What is a biome and what are their characteristics?



A hot desert biome is hot, dry and arid, although temperatures can drop at night and occasional heavy downpours can occur.

How can people use desert? What are the threats to deserts?

Biomes are **vulnerable**, because slight variations in temperature can lead to huge **climate shifts**, that disrupt the natural balance of living and non-living things within them.

- Deforestation
- Renewable energy production
- Mining
- Farming

What are the main characteristics of a desert biome?

Where are desert biomes located?

What physical features are found in a desert?

Where would you rather live in the desert biome or the varied biomes on the Galapagos?



The Galapagos Islands area situated in the **Pacific Ocean**. They lie along the Equator in the eastern Pacific Ocean, 1,000 kilometres west of Ecuador.

Desert biome around the world

