

Chacewater School – LEAP Into Learning – Spring 2 – Red Oaks

SCIENCE: Space and Earth

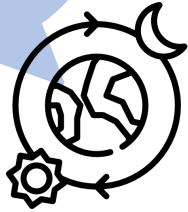


What I might already know: The sun doesn't move across the sky (year 3 – light)



What we will be learning:

How do the Earth, Sun and Moon move in relation to each other?



The Earth takes **24hrs** to complete a full spin.

It takes a little more than **365 days** for the Earth to make a complete trip around the Sun.

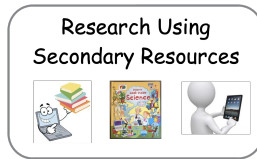
The Moon orbits the Earth. This takes **28 days** or one lunar month.

Earth rotates (spins) on its **axis** whilst orbiting the Sun.

The moon **orbits** Earth in an oval-shaped path whilst it spins on its axis.

Daytime occurs when the side of the **Earth is facing the Sun**.

Night occurs when the side of the Earth is **facing away from the Sun**.



Flat Earth



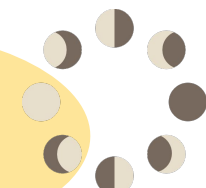
Does the Sun move across the sky?

The Sun appears to be in constant motion—rising on one side of the sky, moving across the sky, and setting on the opposite side. This apparent motion across the sky is **due to the rotation of Earth**.

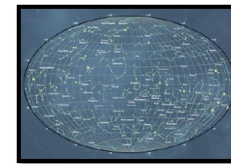
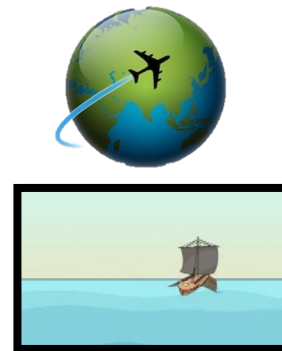


How have our ideas about the solar system changed over time?

Why does the Moon appear to change shape?



Spherical Earth



As the Moon moves, some of the light is **blocked from the Sun by the Earth**. This means we see different parts of the Moon as it makes its orbit around Earth.

The Moon appears to change shape as we see more or less of it. These shapes are called the **phases of the Moon**.